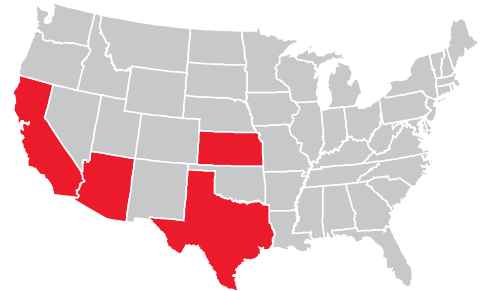


JUST THE **FACTS**

BHE U.S. TRANSMISSION

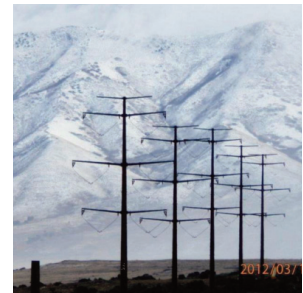
RELIABLE TRANSMISSION SOLUTIONS

- BHE U.S. Transmission provides cost-effective, reliable transmission solutions for wholesale customers.
- BHE U.S. Transmission, along with subsidiaries of American Electric Power Company, indirectly owns a 50 percent interest in Electric Transmission Texas, which owns and operates electric transmission assets in the Electric Reliability Council of Texas.
- BHE U.S. Transmission indirectly owns a 25 percent interest in the Prairie Wind Transmission project in Kansas.



CUSTOMER SERVICE

- BHE U.S. Transmission is part of a group approved by the California ISO to develop, own and operate a new 230-kilovolt transmission line in California's Central Valley region across Fresno and Madera counties. Spanning approximately 60 miles, the new line was studied by the California ISO in 2012-2013 and was planned to reduce the number and duration of power outages; create jobs and support economic development; and bolster efforts to integrate clean, renewable energy onto the grid. Given subsequent updates to assumptions regarding load growth and renewables integration, the California ISO is re-studying the line in its 2017-2018 planning cycle.



OPERATIONAL EXCELLENCE

- The BHE U.S. Transmission team has directly delivered approximately \$1.6 billion of transmission projects at voltages of 345 kilovolts and higher and also has developed multiple projects jointly with other utilities.



> CONTINUED ON BACK

- In 2014, BHE U.S. Transmission formed TransCanyon LLC, a joint venture with Bright Canyon Energy, a newly formed subsidiary of Pinnacle West Capital Corporation. TransCanyon’s purpose is to pursue electric transmission projects located in the Western Electricity Coordinating Council. In March 2016, TransCanyon formed a strategic alliance with Pacific Gas and Electric Company to jointly develop transmission opportunities in the California ISO footprint.
- Heartland, LLC and Midwest Power Midcontinent Transmission, LLC, were formed in 2015 in order to pursue electric transmission projects located in the Southwest Power Pool and Midcontinent ISO, respectively.



MANAGEMENT TEAM



HEATHER L. CUSHMAN
Controller



DOUG A. KUSYK
General Counsel



STEVE C. ROWLEY
Director, Transmission
Business Development

